

Connected Component Workbench Task-based Quick Start

CN03 - Transferring an Offline PVc Application to a PVc Terminal

LISTEN.
THINK.
SOLVE.®

 *Allen-Bradley • Rockwell Software*

**Rockwell
Automation**

Copyright © 2009 Rockwell Automation, Inc.

Hardware & Software Versions Used to Develop This Quick Start

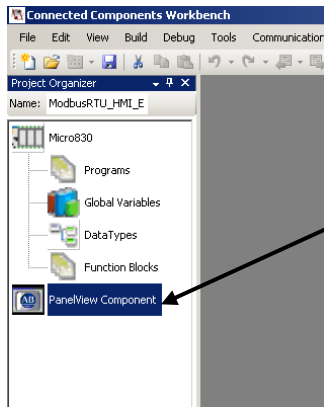
CCW Release 1

PanelView Component C600 – 2711C-T6T

Transferring an Offline PVC Application to a PVC Terminal

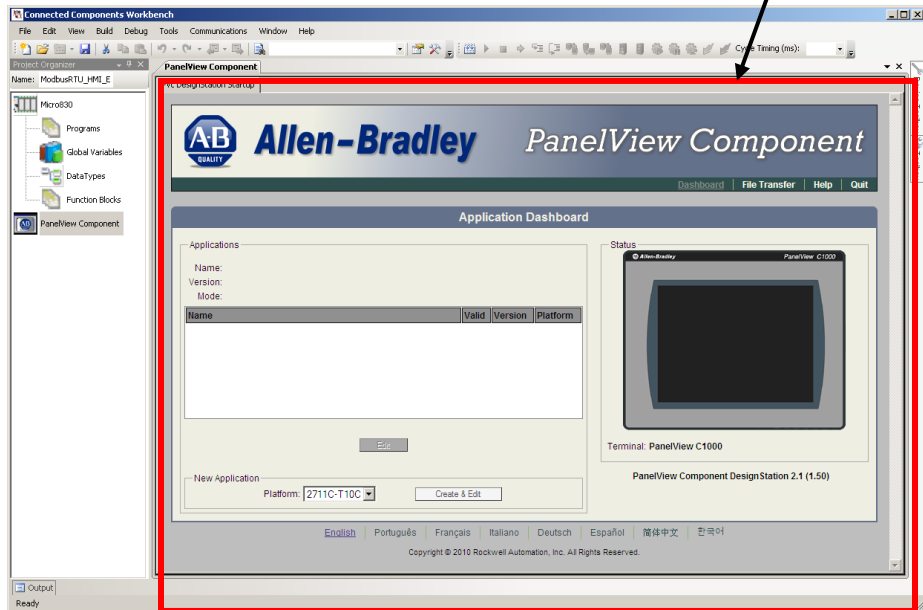
This quick start will demonstrate how to transfer an offline PVC Application to a PVC terminal. Transferring the file involves copying the application to a USB or SD flash media, and then inserting it into the PVC terminal, and copying it to the terminal.

1. From your CCW project, launch the PVC DesignStation Startup pane.



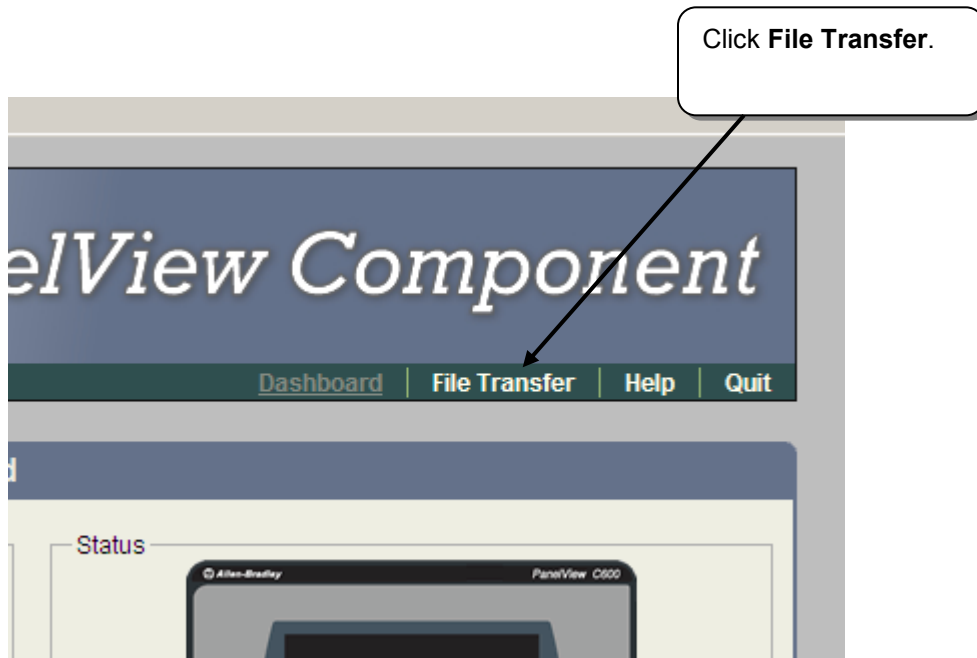
Double-click the **PanelView Component** icon in the **Project Organizer**.

The **PanelView Component Design Station Startup** pane will open as a new tab in the main project window.

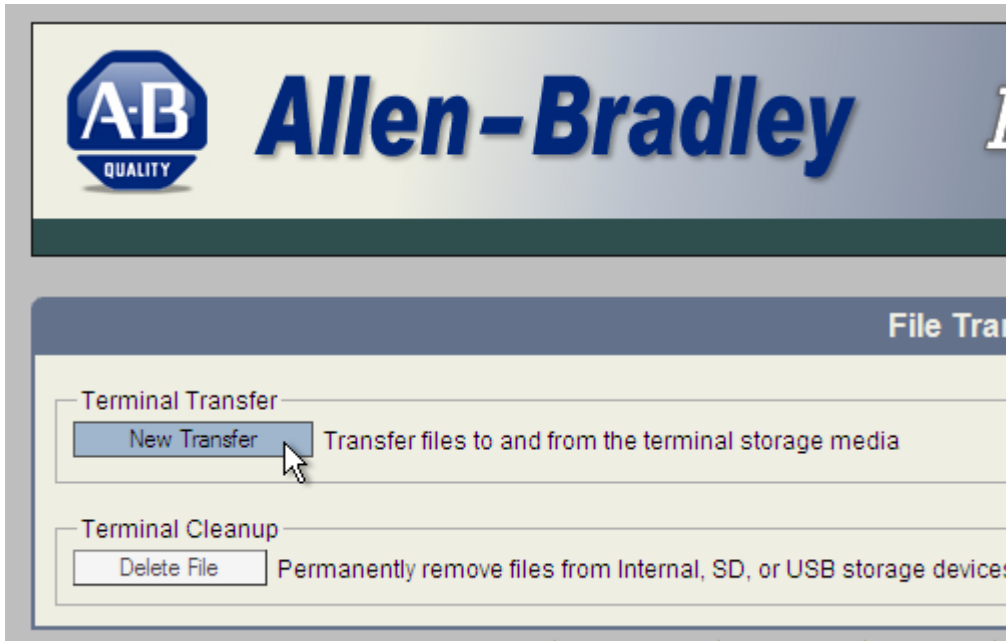


The screenshot shows the **PanelView Component Design Station Startup** pane open in the **Connected Components Workbench**. The pane displays the **Allen-Bradley PanelView Component** logo and the **Application Dashboard**. The dashboard includes fields for **Name**, **Version**, **Mode**, and **Platform**, along with a **Create & Edit** button. A **Status** window shows the terminal information: **Terminal: PanelView C1000** and **PanelView Component DesignStation 2.1 (1.50)**. The pane also includes a **Language** dropdown menu and a **Copyright** notice for Rockwell Automation, Inc. A red box highlights the main content area of the startup pane.

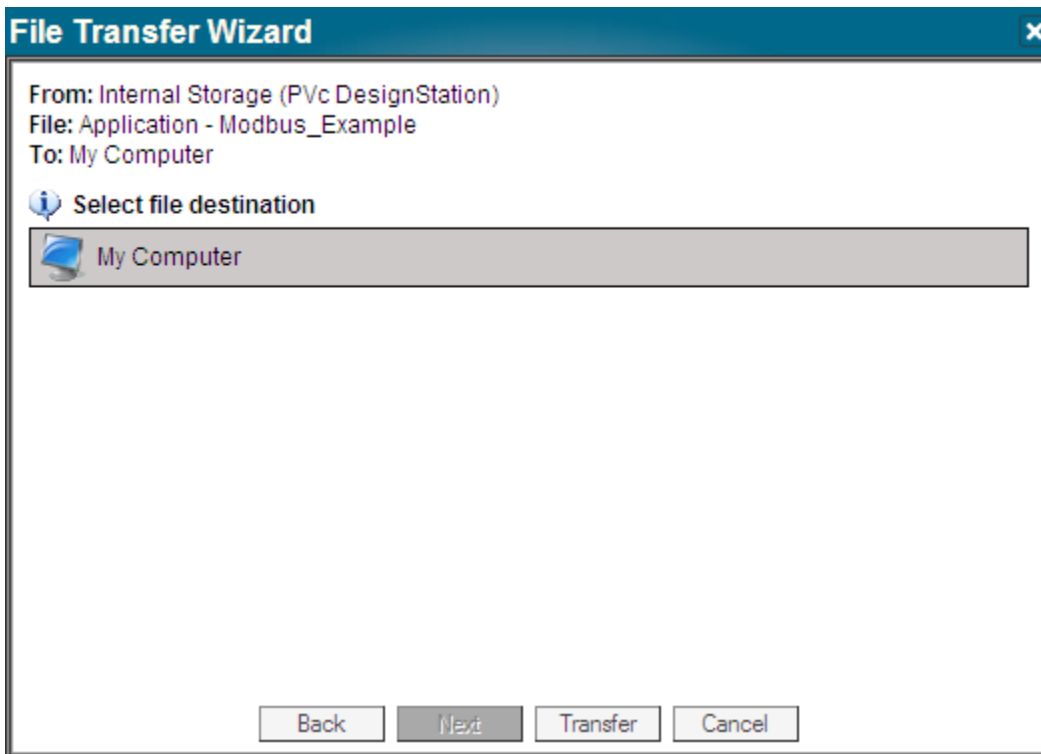
2. Insert either a USB flash drive, or SD card into your computer.
3. Set up a file transfer to copy the application to your USB/SD flash media.



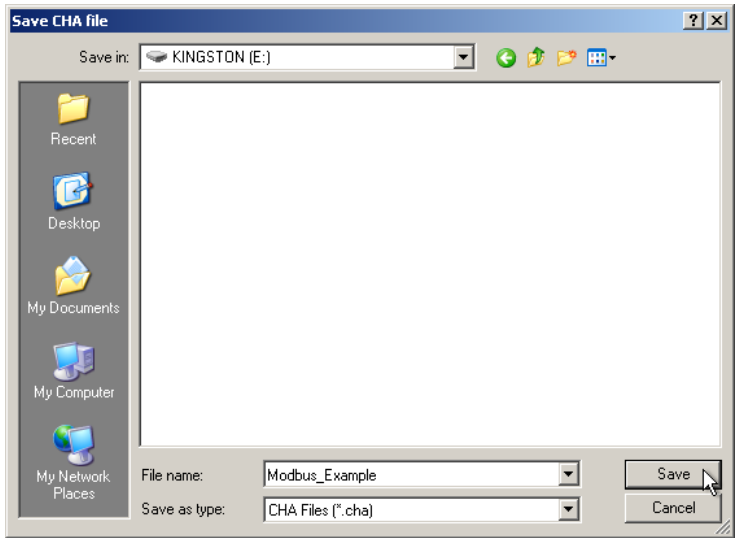
Click **New Transfer**.
This will launch the File
Transfer Wizard.



Configure the File Transfer as shown below, and then click Transfer.

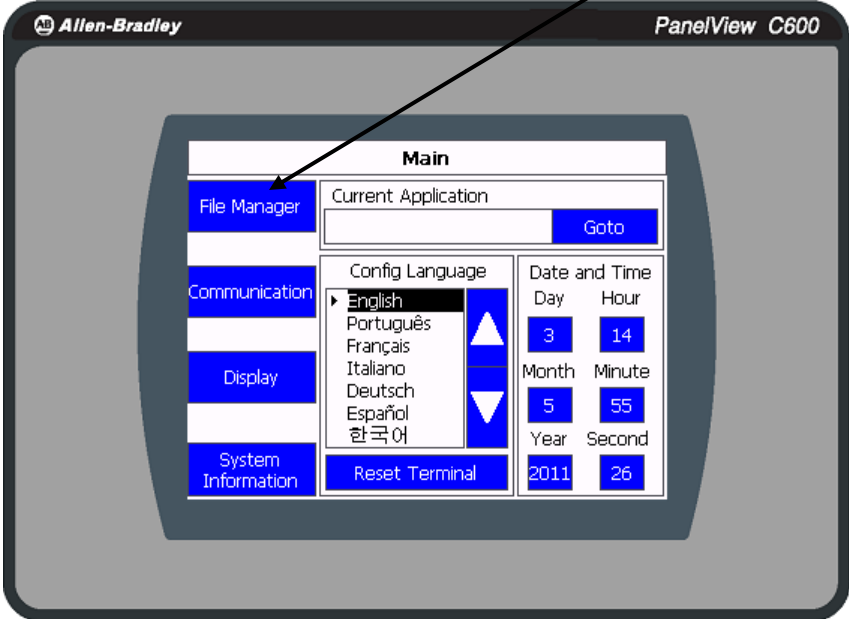


Browse to the root of your flash media, and then click **Save**. This will save the PVC application file (.CHA) to your flash media.

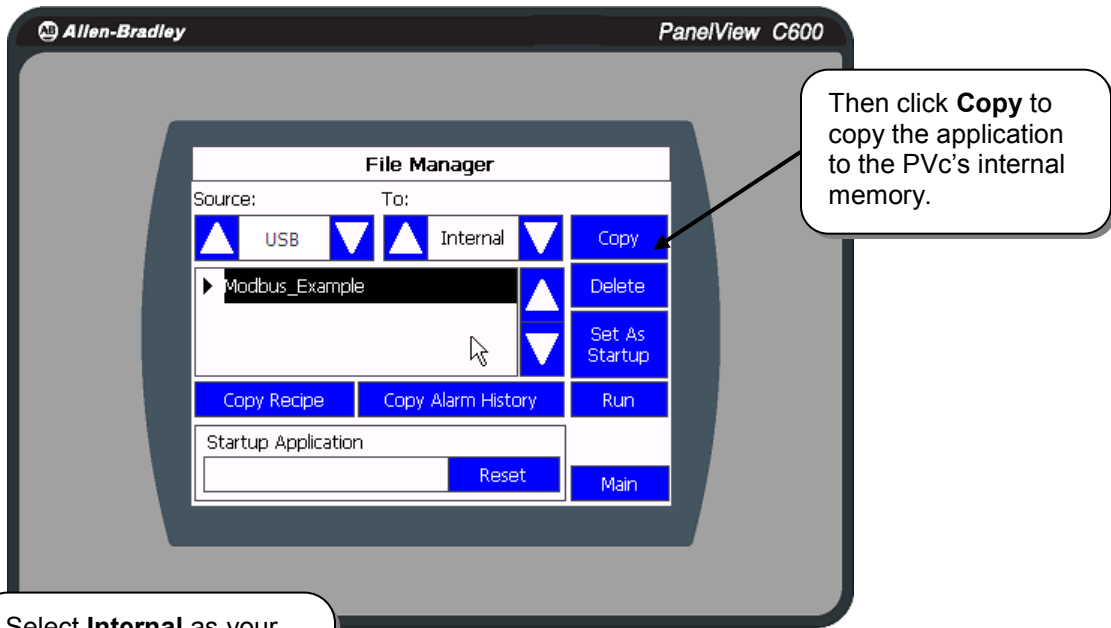


4. Remove the flash media from your computer and insert into PanelView Component terminal.
5. Copy the application from your flash media to your PanelView Component.

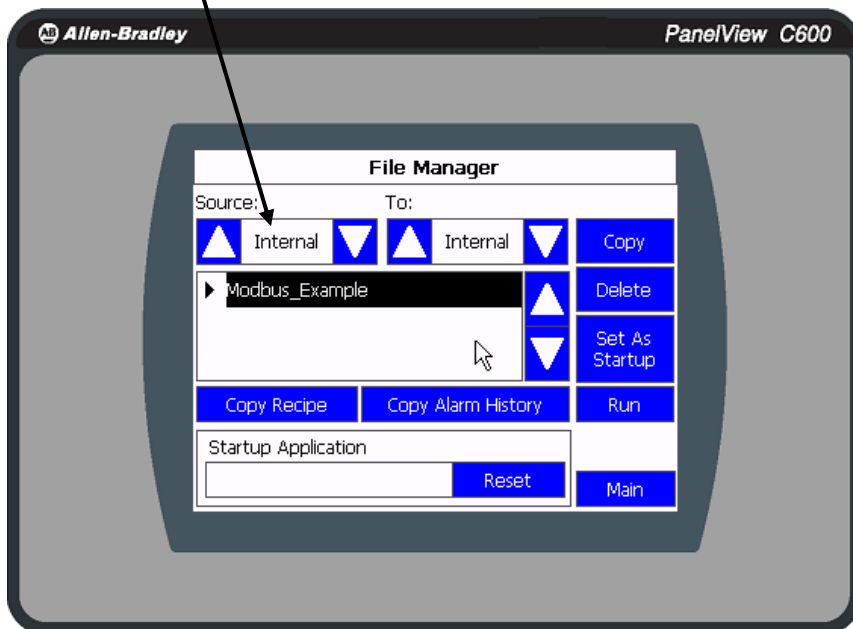
Click **File Manager**.



Select **USB** or **SD** as your Source.



Select **Internal** as your Source, and you'll notice that your application has been copied to your terminal.



6. You have completed transferring an offline application to your PVC terminal.