

Connected Components Workbench Task-based Quick Start

QS# GS01 – Creating a New CCW Project

LISTEN.
THINK.
SOLVE.®

 *Allen-Bradley • Rockwell Software*

**Rockwell
Automation**

Copyright © 2009 Rockwell Automation, Inc.

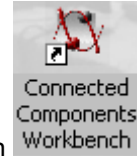
Hardware & Software Versions Used to Develop This Quick Start

- Windows XP, Service Pack 3
- Connected Components Workbench (CCW) Release 1 software

Creating a New CCW Project

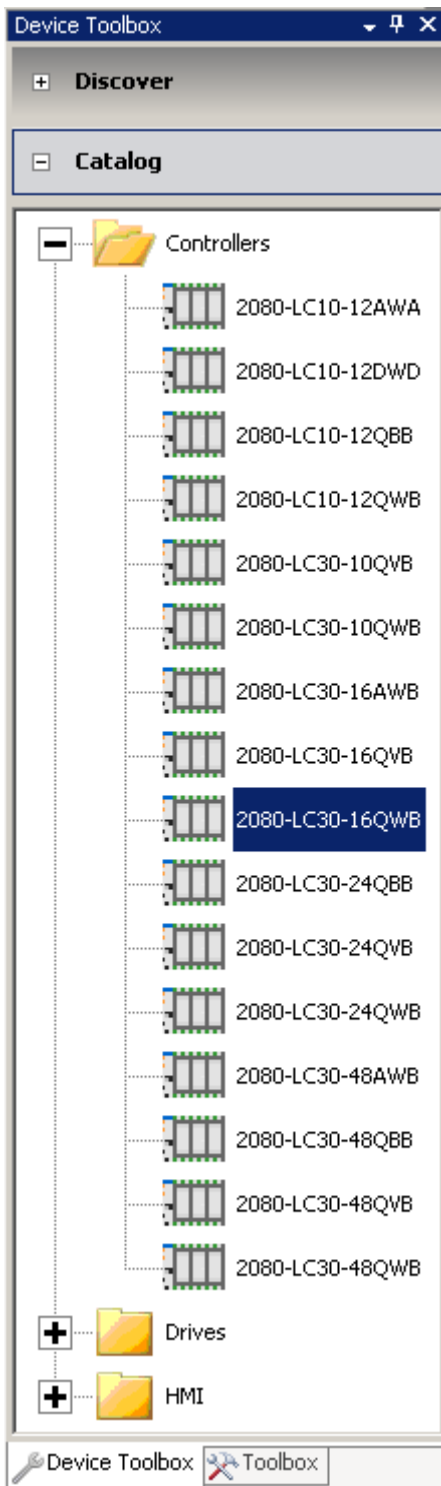
This quick start will show you how to create a new CCW project.

1. Start by opening the Connected Components Workbench software.

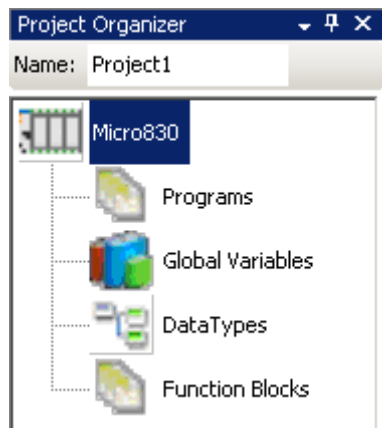


Double click on the **Connected Components Workbench** icon or from the **Start** menu, select **Programs > Rockwell Automation > CCW > Connected Components Workbench**.

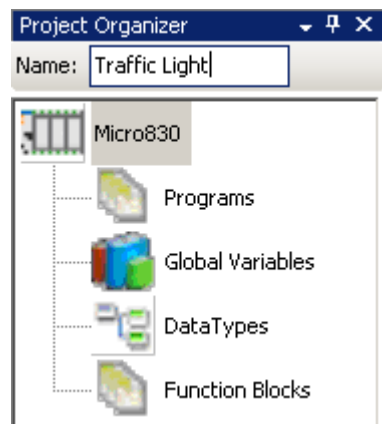
2. Begin a new project by clicking on **Catalog** and expanding the **Controllers** folder in the **Device Toolbox**, which is located on the right-hand side of the Workbench screen. Double click on a Controller. For this quick start we will select the **2080-LC30-16QWB**:



3. A new Micro830 project based on this controller has now been created. The Micro830 should show up in the **Project Organizer** on the left-hand side of the Workbench screen:



4. You can Change the **Name** for the project on top of the **Project Organizer**. Ex: Traffic Light:



5. Click on the  icon to save the project.