

Connected Components Workbench

Task-based Quick Start

QS# GS02 – Configuring Controller Plug-ins

LISTEN.
THINK.
SOLVE.®



Allen-Bradley • Rockwell Software

**Rockwell
Automation**

Copyright © 2009 Rockwell Automation, Inc.

Hardware & Software Versions Used to Develop This Quick Start

- Connected Components Workbench (CCW) Release 1 software

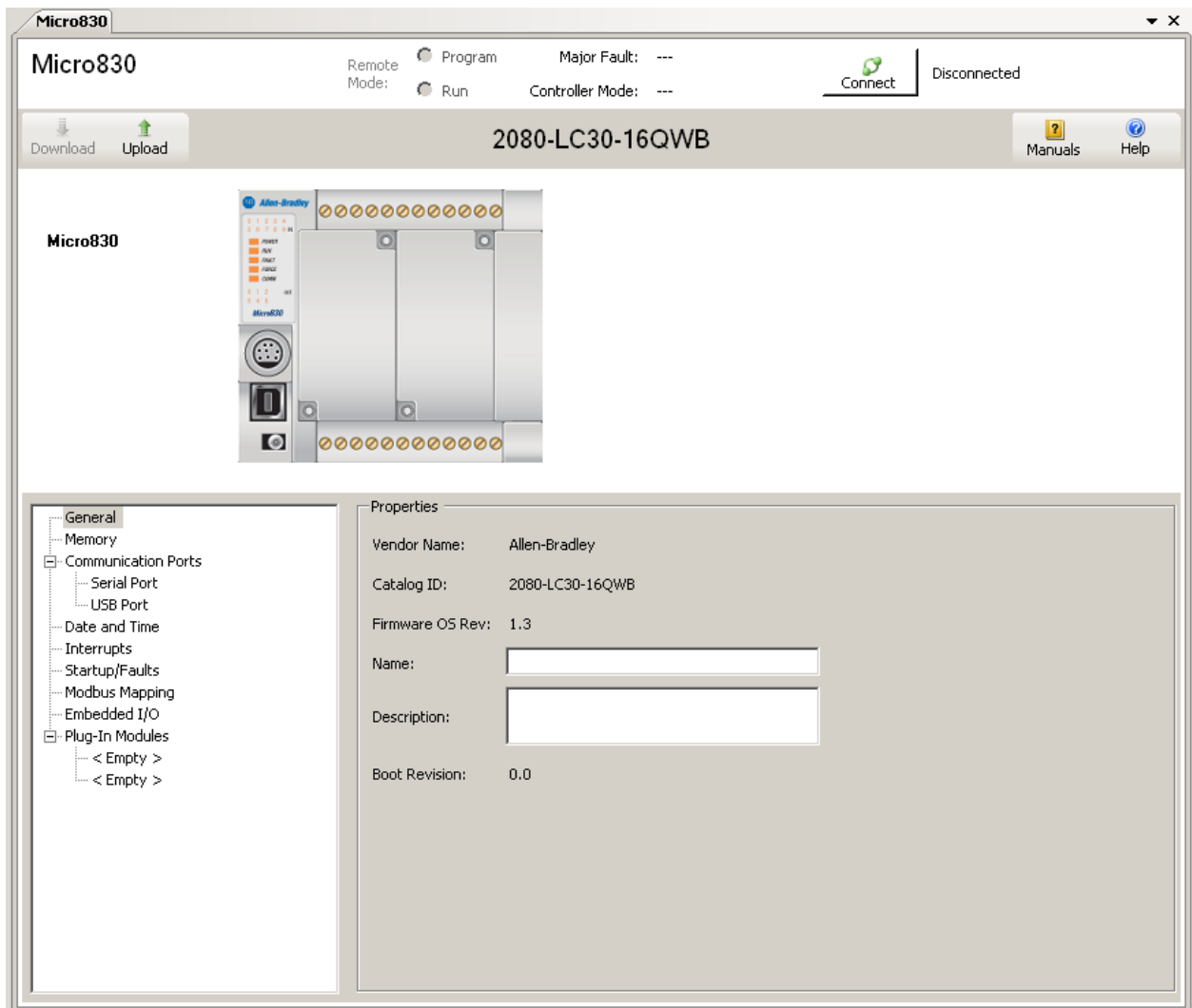
Prerequisite

- QS01 Creating a New CCW Project

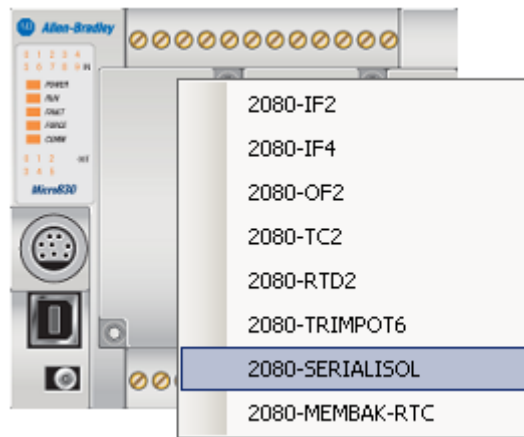
Configuring Controller Plug-ins

This quick start will show you two examples of plug-ins and how they are configured in the controller.

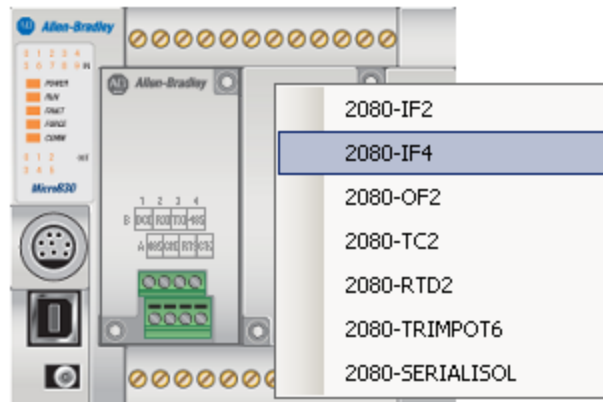
1. To configure the controller plug-ins, double click on the Micro830 icon in the **Project Organizer** to bring up the following screen:



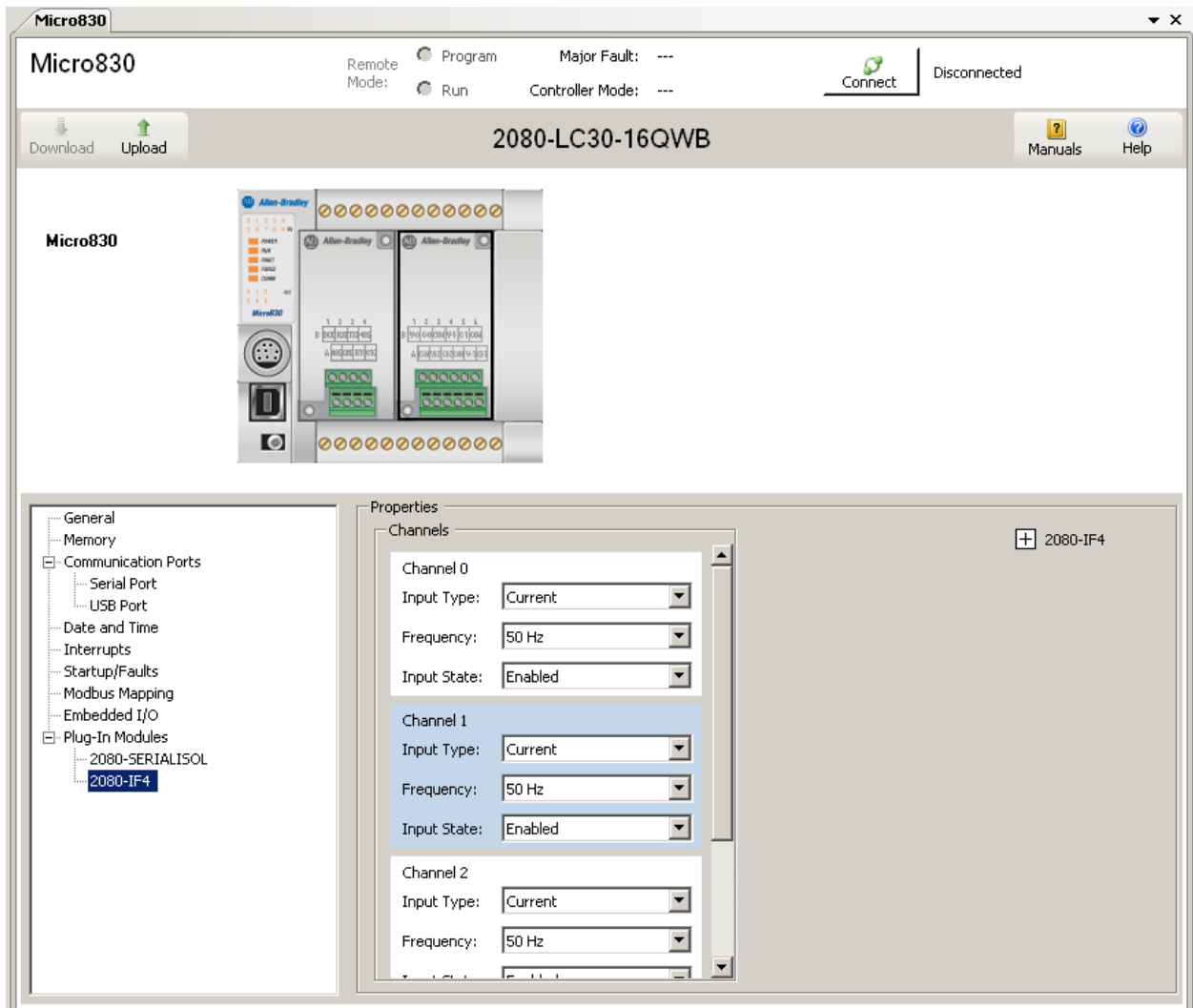
- Assuming Plug-in slot 1 has an isolated serial port module installed in it. Right click on the graphic of the first plug-in slot and select **2080-SERIALISOL**:



- Assuming Plug-in slot 2 has 4-channel analog input module installed in it. Right click on the graphic of the second plug-in slot and select **2080-IF4**:

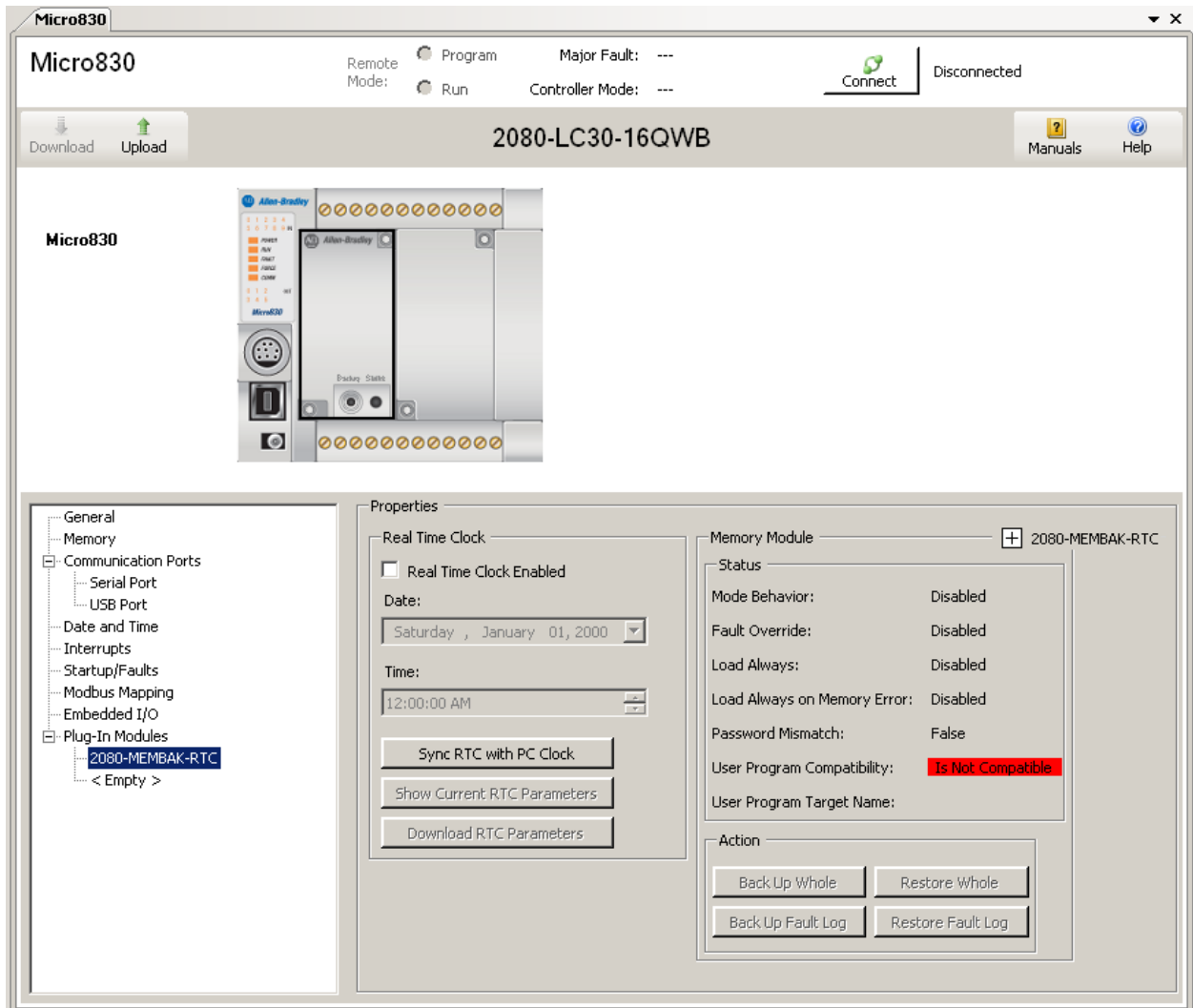


4. Notice that the Micro830 graphic changes to show the installed plug-ins. Now, if you needed to change the **Channel 0 Input Type** for the analog input module, just select under **Properties** from either **Current** or **Voltage** as well as the ability to change the **Frequency** and **Input State**:



5. In the event that a RTC module needs to be configured, repeat step 2, but select the **2080-MEMBAK-RTC** and the screen should look like the following:

Note: RTC Plug-ins can ONLY be on slot 1 of the Micro830.



6. The following tables present a list of the possible Plug-ins for the controllers :

Category	Catalog Number	Description	Controller Support
Analog I/O	2080-IF2	2-ch Analog Input, 0-20mA, 0-10V, non-isolated 12-bit	Micro810, Micro830, Micro850
	2080-IF4	4-ch Analog Input, 0-20mA, 0-10V, non-isolated 12-bit	Micro810, Micro830, Micro850
	2080-OF2	2-ch Analog Output, 0-20mA, 0-10V, non-isolated 12-bit	Micro810, Micro830, Micro850
Specialty	2080-TC2	2-ch TC, non-isolated, 1C	Micro810, Micro830, Micro850
	2080-RTD2	2-ch RTD, non-isolated, 0.5C	Micro810, Micro830, Micro850
	2080-TRIMPOT6	6-ch Trimpot Analog Input	Micro810, Micro830, Micro850
Communications	2080-SERIALISOL	RS232/485 isolated serial port	Micro810, Micro830, Micro850
Backup Memory	2080-MEMBAK-RTC	Project, Data Log, Recipe Backup and High Accuracy RTC	Micro830, Micro850