

# Connected Components Workbench Task-based Quick Start

## QS# GS06 - Establishing Communications Between RSLinx and a Micro830 via USB

LISTEN.  
THINK.  
SOLVE.®

 *Allen-Bradley • Rockwell Software*

**Rockwell  
Automation**

Copyright © 2009 Rockwell Automation, Inc.

## **Hardware & Software Versions Used to Develop This Quick Start**

- 2080-LC30-16QWB v1.03
- Standard USB A/B cable (3 meter maximum)
- RSLinx Classic version 2.57 build 15

---

## Establishing Communications Between RSLinx and a Micro830 via USB

This quick start will show you how to get RSLinx RSWho communicating with a Micro830 controller via USB.

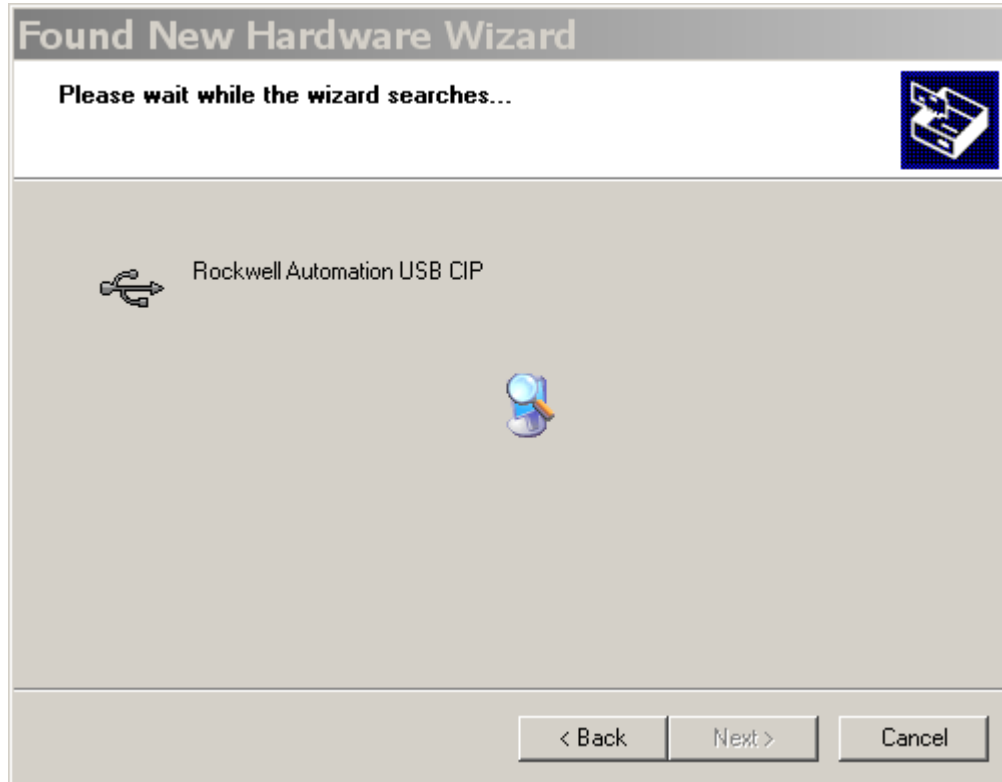
1. Normally RSLinx Classic is installed as part of the Connected Components Workbench software installation process. The minimum version of RSLinx Classic with full Micro800 controller support is 2.57, build 15 (released in March 2011).
2. Power up the Micro830 controller.
3. Plug USB A/B cable directly between your PC and the Micro830.
4. Windows should discover the new hardware. Click **No, not this time** and **Next**:



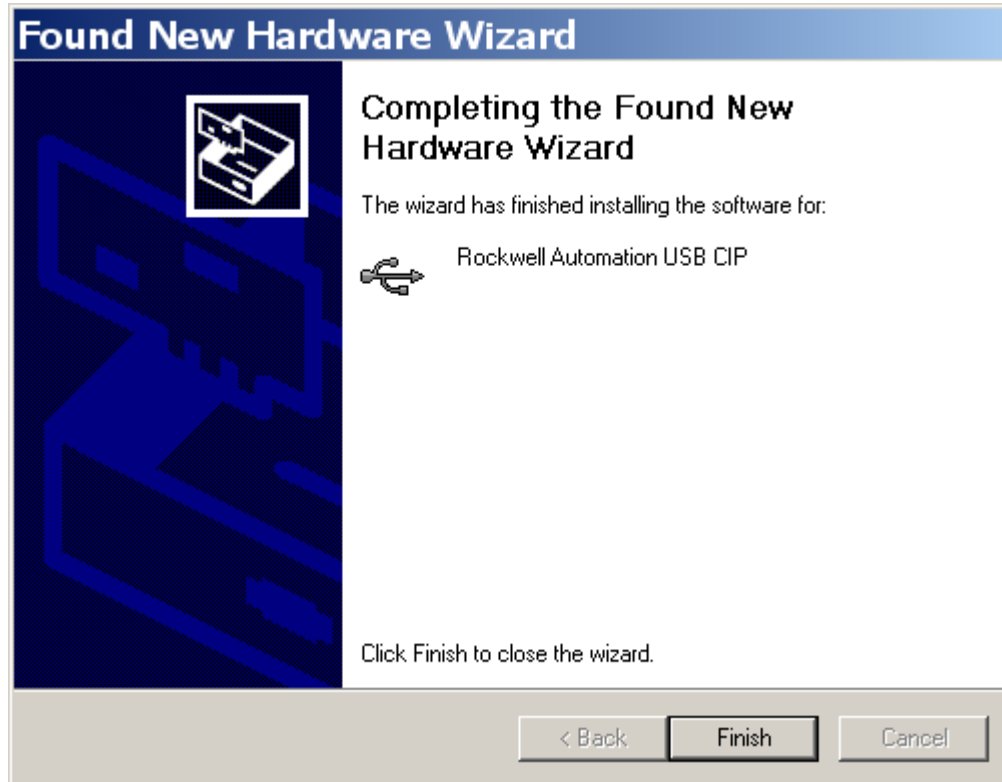
5. Click ***Install the software automatically (Recommended)*** and ***Next***:




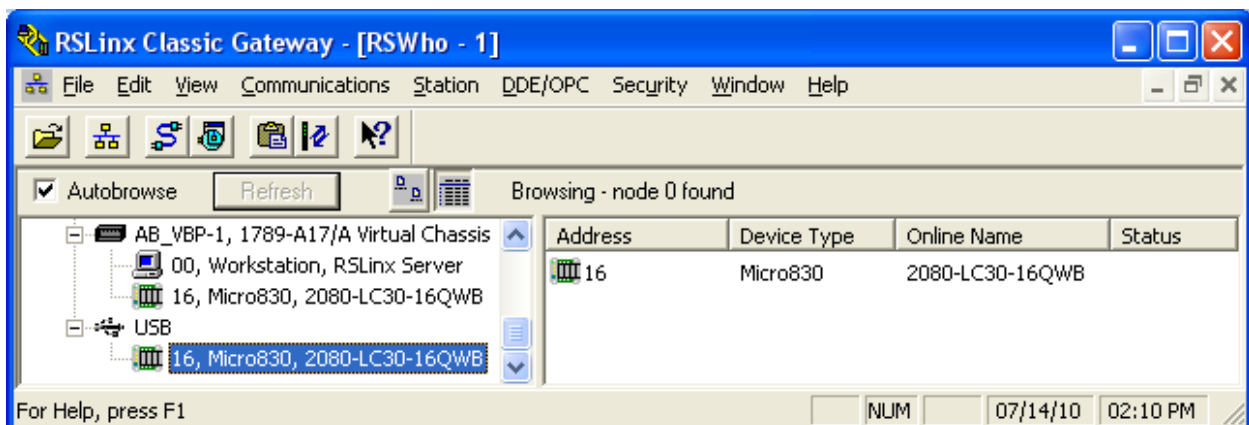
6. Wizard will search:



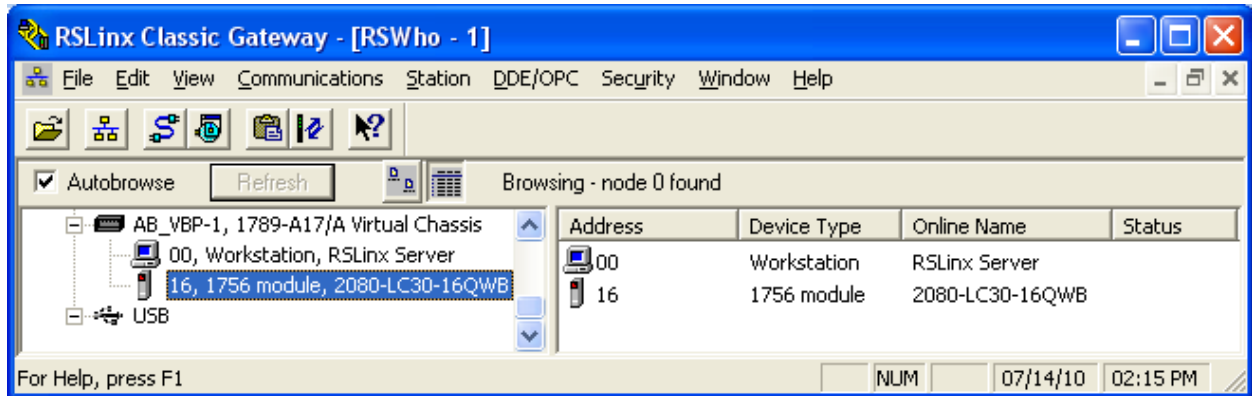
7. Wizard should complete in less than a minute. Click **Finish**:



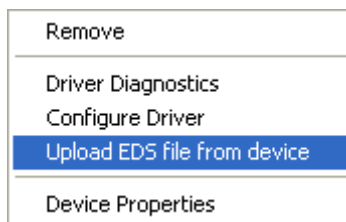
8. Open up RSLinx Classic and run RSWho by clicking on the  icon.
9. If the proper EDS file is installed, the Micro830 controller should be properly identified and show up under both the Virtual Backplane (VBP) driver and the USB driver, which was automatically created:



10. If instead the Micro830 shows up as a “1756 Module” under the AB\_VBP-1 Virtual Chassis driver, then the proper EDS file for this major revision of firmware has not yet been installed or the controller is running pre-release firmware (Major Revision=0).



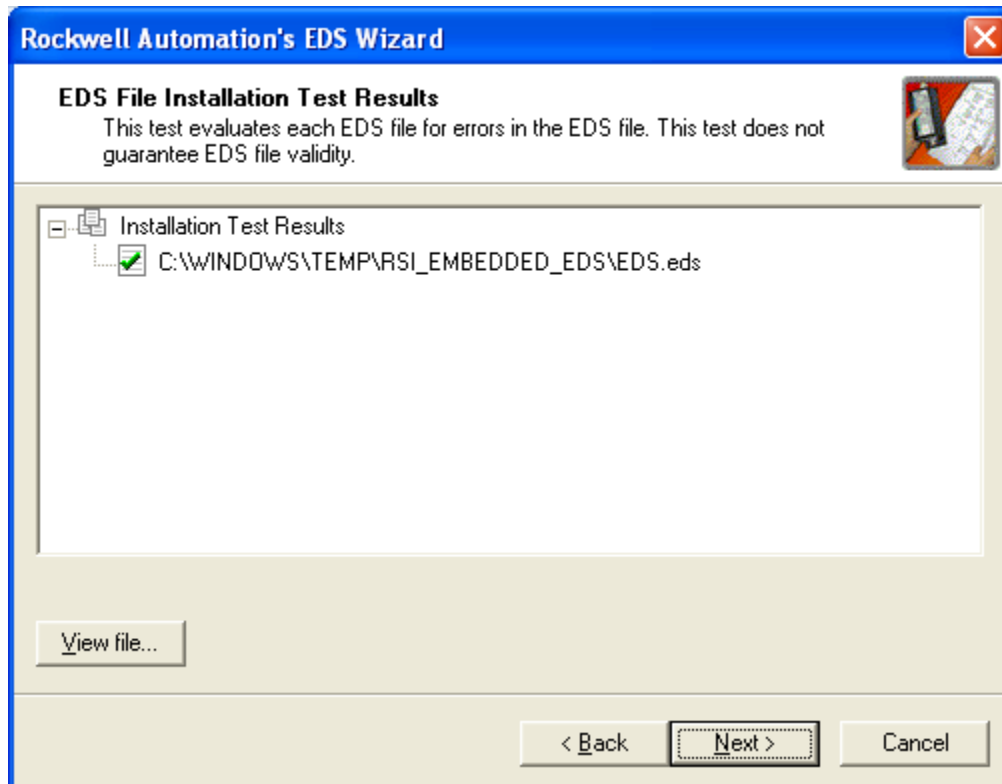
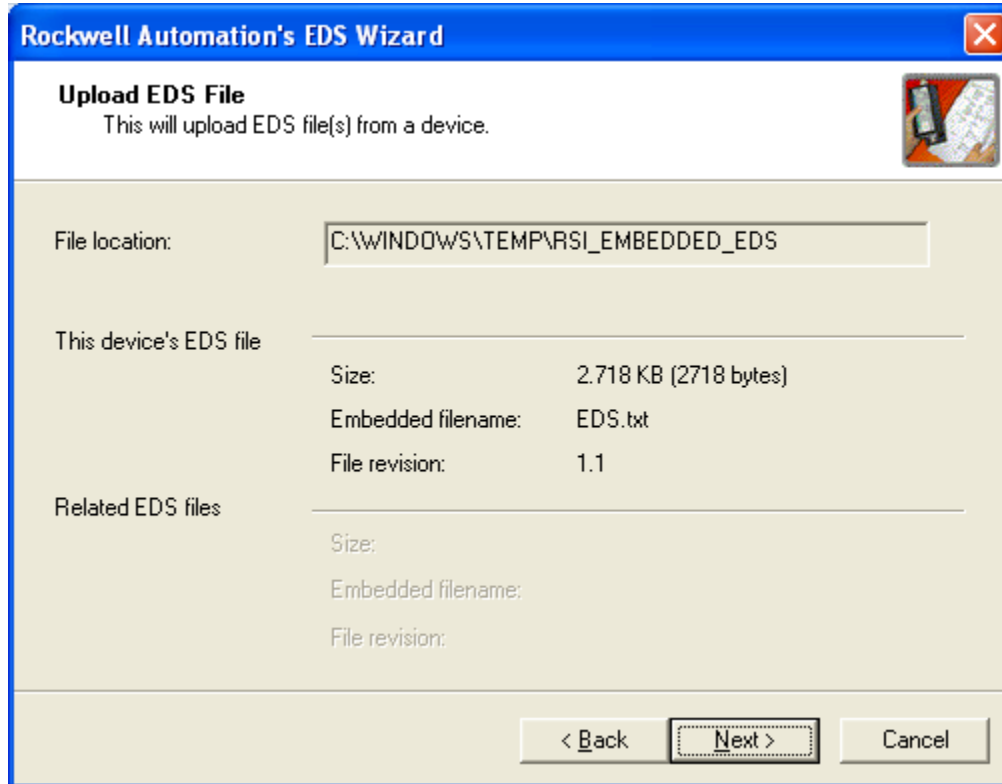
11. Since Micro830 controllers support embedded EDS files, right click on this device and select **Upload EDS file from device**:

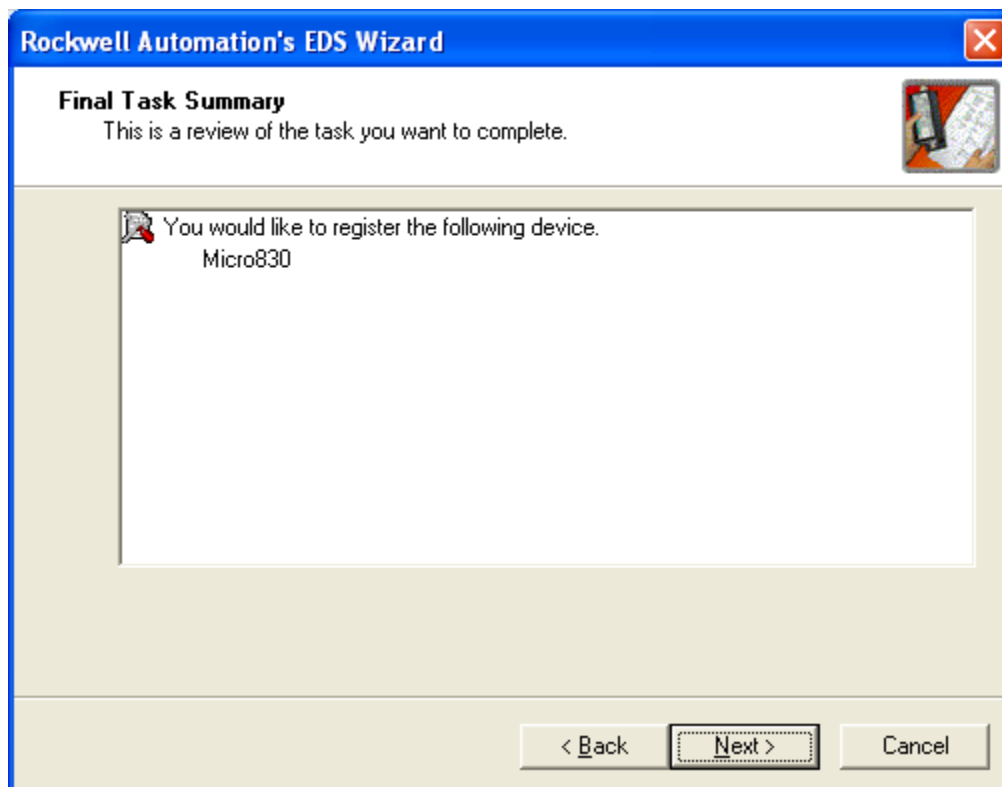
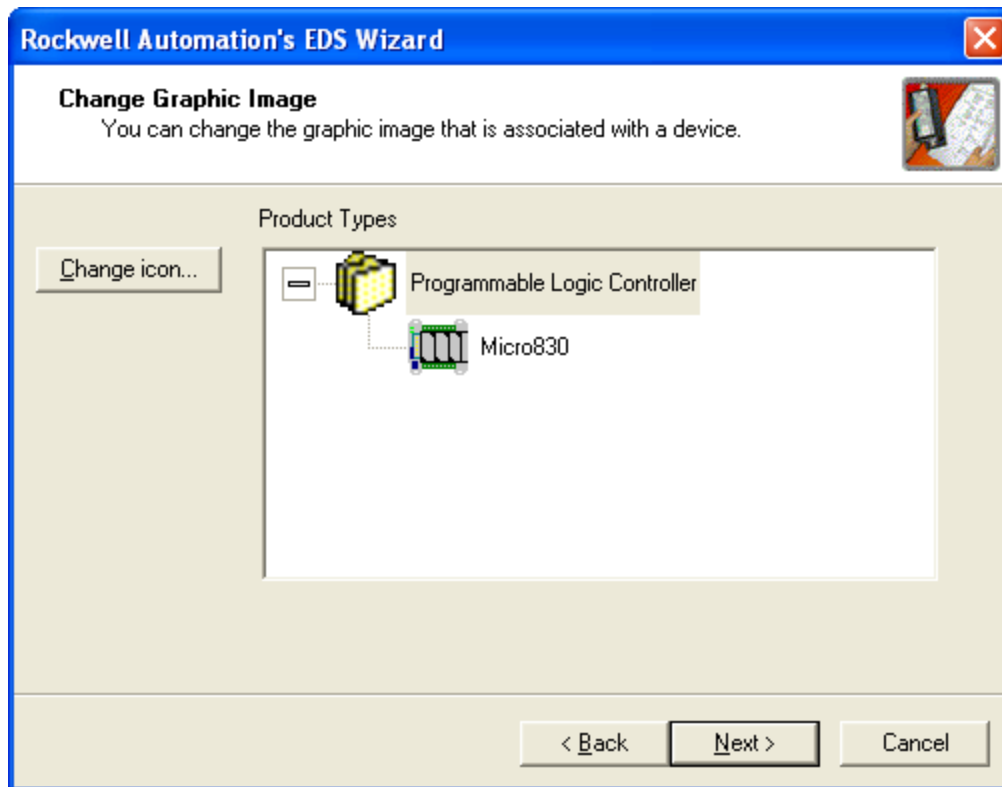


12. This will bring up the EDS Wizard. Click **Next** to continue:

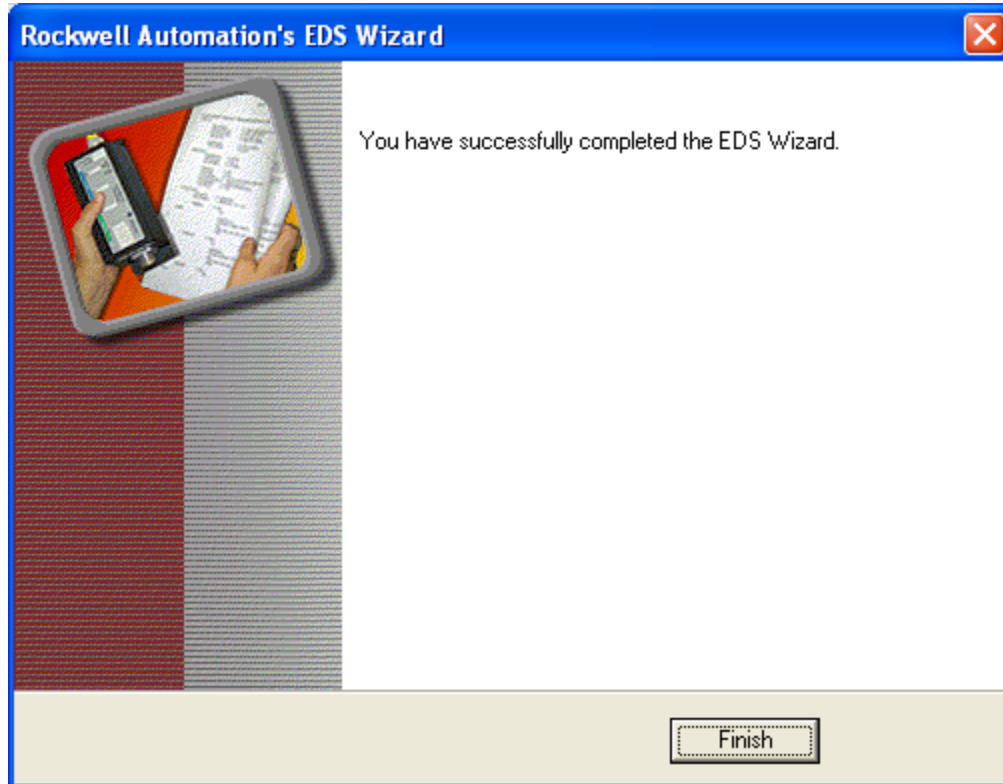


13. Follow the prompts to upload and install the EDS file:





14. Click **Finish** to complete:



15. If the Micro830 still shows up as a 1756 Module, then you are probably running pre-release firmware which is reporting itself as Major Revision 0, which does not match the embedded EDS file. To confirm, right click on the device and select Device Properties (firmware **Revision** is Major.Minor):

