

Connected Components Workbench Task-based Quick Start

QS# GS14 - Establishing Communications Between RSLinx and a Micro810 12-pt. via USB

LISTEN.
THINK.
SOLVE.®

 *Allen-Bradley • Rockwell Software*

**Rockwell
Automation**

Copyright © 2009 Rockwell Automation, Inc.

Hardware & Software Versions Used to Develop This Quick Start

- Micro810, 2080-LC10-12QWB, v1.02
- USB Adapter, 2080-USBADAPTER
- Standard USB A/B cable (3 meter maximum)
- RSLinx Classic version 2.57 build 15

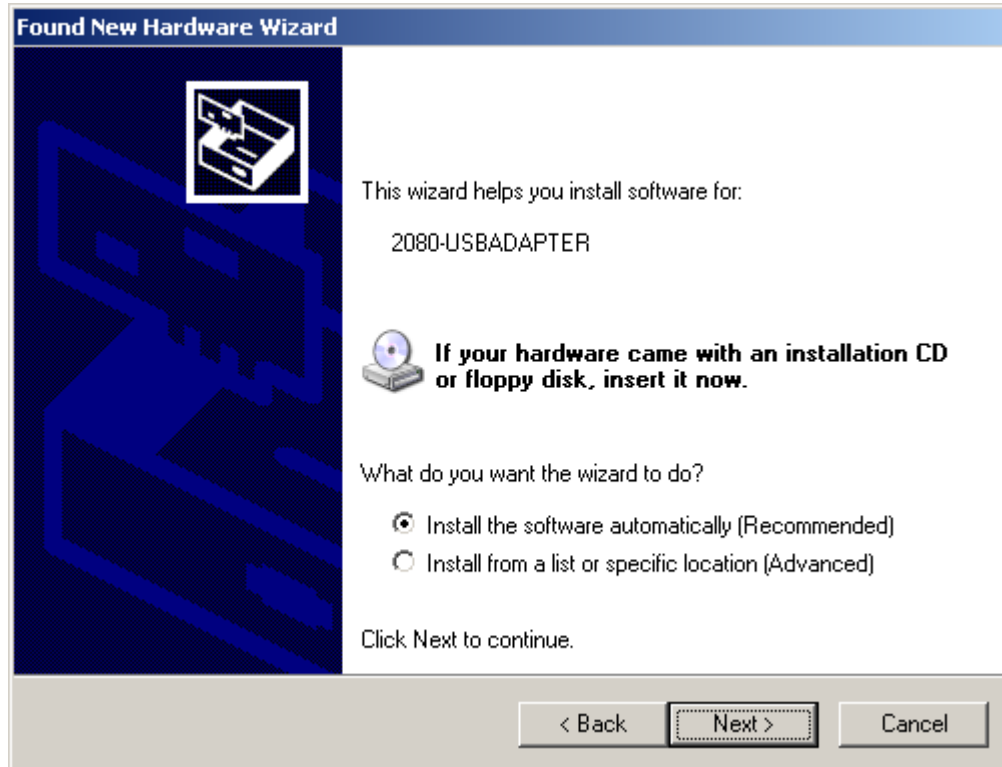
Establishing Communications Between RSLinx and a Micro810 12-pt. via USB

This quick start will show you how to get RSLinx RSWho communicating with a Micro810 12-pt. controller via USB.

1. Normally RSLinx Classic is installed as part of the Connected Components Workbench software installation process. The minimum version of RSLinx Classic with full Micro800 controller support is 2.57, build 15 (released March 2011).
2. Power up the Micro810 12-pt. controller.
3. Plug the 2080-USBADAPTER into the Micro810 and then plug the USB A/B cable directly between your PC and the adapter.
4. Windows should discover the new hardware. Click **No, not this time** and **Next**:

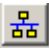


5. Click **Next** to continue:



6. Wizard should complete in less than a minute. Click **Finish**:



7. Open RSLinx Classic and run RSWho by clicking on the  icon.
8. The Micro810 controller should show up under the 12PtM810 driver.



9. You may now use ControlFLASH or CCW to communicate with the Micro810.